

\$615,000 - 75 Range Road, Rural Grande Prairie No. 1, County of

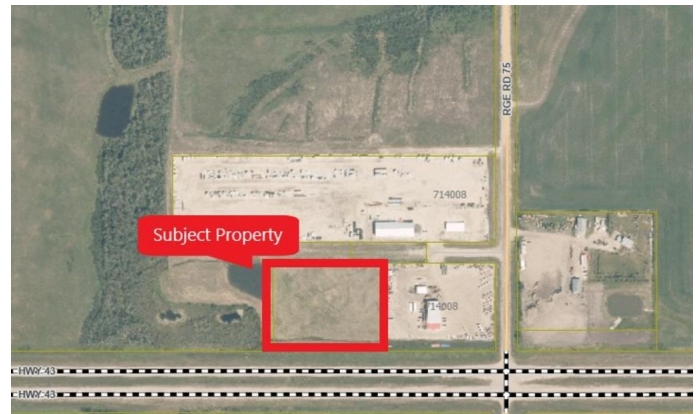
MLS® #A2028031

\$615,000

0 Bedroom, 0.00 Bathroom,
Land on 5.86 Acres

NONE, Rural Grande Prairie No. 1, County of,
Alberta

This prime 5.86-acre commercial lot is strategically located just East of Grande Prairie off of RR 75 with direct frontage onto Highway 43. Situated in the County, this lot is zoned RM-2, with access to gas, power, and Telus high-speed internet. With an asking price of \$105,000 per acre, this well-sloped lot offers incredible exposure, which is sure to elevate your company's profile and visibility. As one of the busiest highways in the region, Highway 43 guarantees a steady flow of traffic that could translate into potential customers for your Business. To view call your Commercial RealtorÂ© today.



Essential Information

MLS® #	A2028031
Price	\$615,000
Bathrooms	0.00
Acres	5.86
Type	Land
Sub-Type	Commercial Land
Status	Active

Community Information

Address	75 Range Road
Subdivision	NONE
City	Rural Grande Prairie No. 1, County of

County	Grande Prairie No. 1, County of
Province	Alberta
Postal Code	T0H 3S0

Additional Information

Date Listed	February 27th, 2023
Days on Market	783
Zoning	RM-2

Listing Details

Listing Office	RE/MAX Grande Prairie
----------------	-----------------------

Data is supplied by Pillar 9â„¢ MLS® System. Pillar 9â„¢ is the owner of the copyright in its MLS® System. Data is deemed reliable but is not guaranteed accurate by Pillar 9â„¢. The trademarks MLS®, Multiple Listing Service® and the associated logos are owned by The Canadian Real Estate Association (CREA) and identify the quality of services provided by real estate professionals who are members of CREA. Used under license.