

\$1,299,900 - 429 Starlight Way, Rural Pincher Creek No. 9, M.D. of

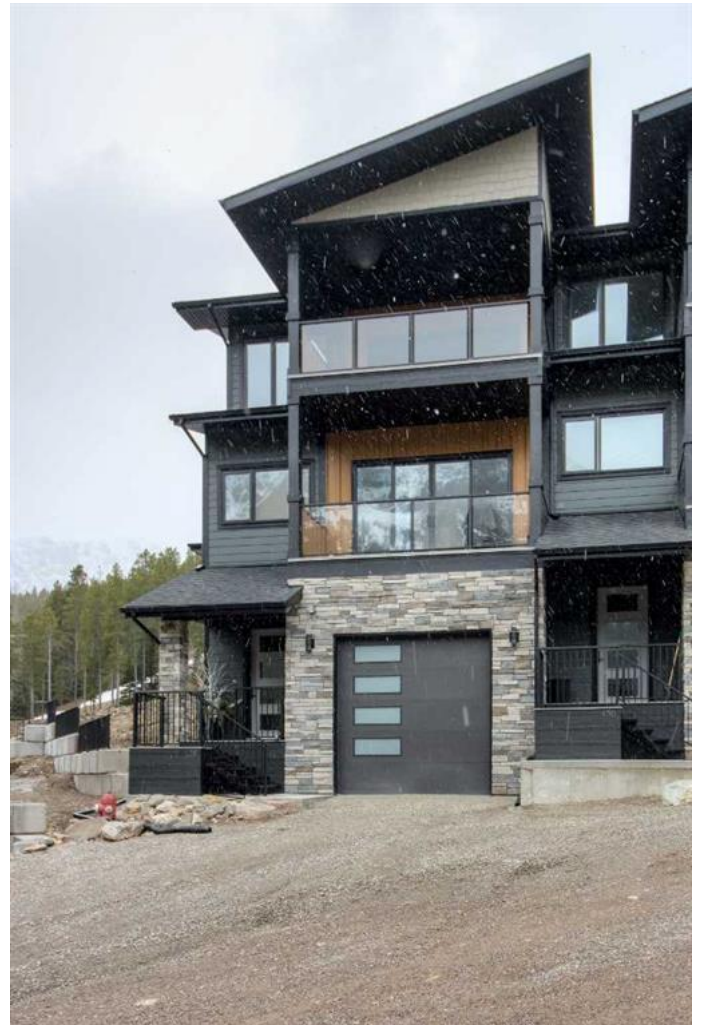
MLS® #A2128338

\$1,299,900

5 Bedroom, 4.00 Bathroom, 2,724 sqft
Residential on 0.13 Acres

Castle Mountain Resort, Rural Pincher Creek
No. 9, M.D. of, Alberta

Discover the ultimate ski-in/ski-out luxury with this stunning contemporary townhome at Castle Mountain Resort. With three spacious levels and five bedrooms, this nearly new home backs directly onto the ski hill, offering unparalleled access to skiing, snowboarding, and nature exploration. The ground level welcomes you with an attached garage, perfect for storing all your ski equipment, along with a bedroom and a full bathroom. As you ascend to the main floor, you're greeted by a bright and airy open-concept space. The gourmet kitchen boasts beautiful custom cabinets, a large island, and high-end appliances, making it a chef's dream. Adjacent to the kitchen, the living and dining areas are designed for both comfort and entertainment, featuring a corner fireplace that adds a touch of warmth and ambiance. Step outside to the covered deck, complete with a hot tub and captivating views of the ski hill—ideal for unwinding after a day on the slopes. The top floor hosts the expansive primary suite, offering not one but two closets, a luxurious ensuite bathroom, and a private covered balcony with breathtaking views. This level also has a second family room, providing ample space for relaxation or gatherings, along with two additional bedrooms and a full bathroom. This prime location, approximately 140 km from Lethbridge and 270 km from



Calgary, makes it an exceptional retreat for both weekend getaways and extended stays. Don't miss the chance to experience the best of mountain living in this beautifully designed townhome

Built in 2023

Essential Information

MLS® #	A2128338
Price	\$1,299,900
Bedrooms	5
Bathrooms	4.00
Full Baths	4
Square Footage	2,724
Acres	0.13
Year Built	2023
Type	Residential
Sub-Type	Row/Townhouse
Style	3 Storey
Status	Active

Community Information

Address	429 Starlight Way
Subdivision	Castle Mountain Resort
City	Rural Pincher Creek No. 9, M.D. of
County	Pincher Creek No. 9, M.D. of
Province	Alberta
Postal Code	T0K 1W0

Amenities

Parking Spaces	2
Parking	Driveway, Single Garage Attached
# of Garages	1

Interior

Interior Features	Breakfast Bar, Double Vanity, High Ceilings, See Remarks
Appliances	Dryer, Refrigerator, Stove(s), Washer
Heating	Forced Air

Cooling	None
Fireplace	Yes
# of Fireplaces	1
Fireplaces	Gas
Basement	None

Exterior

Exterior Features	Balcony
Lot Description	Irregular Lot, See Remarks
Roof	Asphalt Shingle
Construction	Mixed
Foundation	Poured Concrete

Additional Information

Date Listed	May 6th, 2024
Days on Market	354
Zoning	CMDR

Listing Details

Listing Office	RE/MAX REAL ESTATE - LETHBRIDGE
----------------	---------------------------------



Data is supplied by Pillar 9â„¢ MLSÂ® System. Pillar 9â„¢ is the owner of the copyright in its MLSÂ® System. Data is deemed reliable but is not guaranteed accurate by Pillar 9â„¢. The trademarks MLSÂ®, Multiple Listing ServiceÂ® and the associated logos are owned by The Canadian Real Estate Association (CREA) and identify the quality of services provided by real estate professionals who are members of CREA. Used under license.