

# \$369,900 - 21, 111 Tarawood Lane Ne, Calgary

MLS® #A2190391

**\$369,900**

2 Bedroom, 2.00 Bathroom, 1,100 sqft  
Residential on 0.04 Acres

Taradale, Calgary, Alberta

Bright end unit 2 bed 1.5 bath, with minutes walk to the shopping complex and Saddle Towne Circle Ctrain station. Nice big kitchen with dining area, spacious living room and 2 pc washroom on the main floor. Upper floor has 2 huge bedrooms with full washroom. Full unspoiled basement waiting for your creative ideas. Parking just in front of the house. Dont Miss this one Call Your Favourite Realtor Now !!

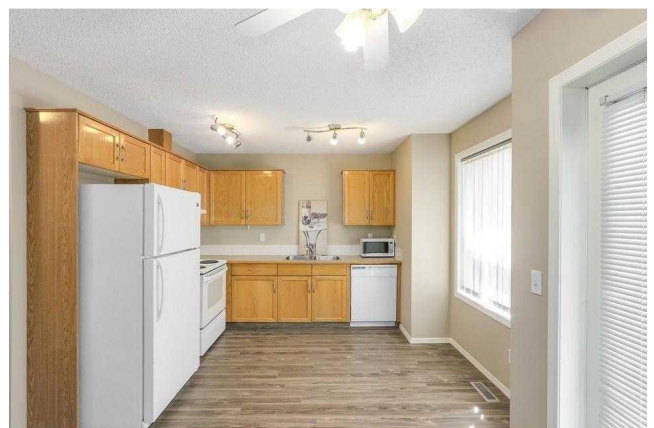
Built in 2003

## Essential Information

MLS® #	A2190391
Price	\$369,900
Bedrooms	2
Bathrooms	2.00
Full Baths	1
Half Baths	1
Square Footage	1,100
Acres	0.04
Year Built	2003
Type	Residential
Sub-Type	Row/Townhouse
Style	2 Storey
Status	Active

## Community Information

Address 21, 111 Tarawood Lane Ne



Subdivision	Taradale
City	Calgary
County	Calgary
Province	Alberta
Postal Code	T3J 5B9

### **Amenities**

Amenities	Playground, Visitor Parking
Parking Spaces	1
Parking	Assigned, Stall

### **Interior**

Interior Features	No Animal Home, No Smoking Home
Appliances	Dishwasher, Dryer, Electric Stove, Range Hood, Refrigerator, Washer
Heating	Forced Air, Natural Gas
Cooling	None
Has Basement	Yes
Basement	Full, Unfinished

### **Exterior**

Exterior Features	Other
Lot Description	Landscaped, Corner Lot
Roof	Asphalt Shingle
Construction	Vinyl Siding, Wood Frame
Foundation	Poured Concrete

### **Additional Information**

Date Listed	January 28th, 2025
Days on Market	67
Zoning	M-1 d75

### **Listing Details**

Listing Office	URBAN-REALTY.ca
----------------	-----------------

Data is supplied by Pillar 9â„¢ MLSÂ® System. Pillar 9â„¢ is the owner of the copyright in its MLSÂ® System. Data is deemed reliable but is not guaranteed accurate by Pillar 9â„¢. The trademarks MLSÂ®, Multiple Listing ServiceÂ® and the associated logos are owned by The Canadian Real Estate Association (CREA) and identify the quality of services provided by real estate professionals who are members of CREA. Used under license.