

\$219,900 - 212, 4455a Greenview Drive Ne, Calgary

MLS® #A2191932

\$219,900

1 Bedroom, 1.00 Bathroom, 617 sqft

Residential on 0.00 Acres

Greenview, Calgary, Alberta

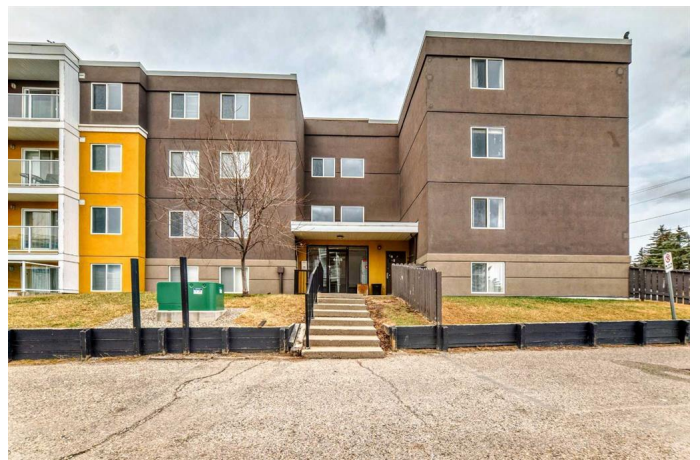
Welcome to this PET-FRIENDLY END UNIT CONDO in desirable Greenview Park! This charming one-bedroom, one-bathroom home features original cupboards paired with granite countertops in the kitchen and bathroom, VINYL PLANK FLOORING THROUGHOUT THE UNIT (just 3 years old), and a FULLY UPDATED BATHROOM CEILING. Youâ€™ll love relaxing on your PRIVATE BALCONY WITH PEACEFUL PARK VIEWS. Additional perks include FULL-SIZE IN-SUITE LAUNDRY and a POWERED PARKING STALL. Donâ€™t miss your chanceâ€”book your showing today

Built in 1981

Essential Information

MLS® #	A2191932
Price	\$219,900
Bedrooms	1
Bathrooms	1.00
Full Baths	1
Square Footage	617
Acres	0.00
Year Built	1981
Type	Residential
Sub-Type	Apartment
Style	Low-Rise(1-4)
Status	Active

Community Information



Address	212, 4455a Greenview Drive Ne
Subdivision	Greenview
City	Calgary
County	Calgary
Province	Alberta
Postal Code	T2E5R3

Amenities

Amenities	Elevator(s), Coin Laundry, Parking, Snow Removal, Visitor Parking
Parking Spaces	1
Parking	Stall

Interior

Interior Features	No Animal Home, No Smoking Home, Granite Counters, Storage
Appliances	Dishwasher, Microwave, Refrigerator, Window Coverings, Electric Stove, Microwave Hood Fan, Washer/Dryer Stacked
Heating	Baseboard
Cooling	None
# of Stories	4

Exterior

Exterior Features	Playground
Construction	Wood Frame

Additional Information

Date Listed	April 18th, 2025
Days on Market	9
Zoning	M-C2

Listing Details

Listing Office	CIR Realty
----------------	------------

Data is supplied by Pillar 9â„¢ MLS® System. Pillar 9â„¢ is the owner of the copyright in its MLS® System. Data is deemed reliable but is not guaranteed accurate by Pillar 9â„¢. The trademarks MLS®, Multiple Listing Service® and the associated logos are owned by The Canadian Real Estate Association (CREA) and identify the quality of services provided by real estate professionals who are members of CREA. Used under license.