

\$1,400,000 - 28327 Highway 592, Rural Red Deer County

MLS® #A2200939

\$1,400,000

0 Bedroom, 0.00 Bathroom,
Land on 155.50 Acres

NONE, Rural Red Deer County, Alberta

Prime Agricultural Land with Exceptional
Exposure & Access

This exceptional 155.5-acre property features
highway exposure on two sides, a gentle
eastern slope, and well-drained
topographyâ€™making it a valuable addition to
any agricultural operation.

Property Features:

Serviced Yardsite

Gravel driveway with highway approach
Power

Propane (rented)

Water well (drilled in 2001)

Septic system (from mobile home, condition
unknown)

Mature trees and bush for wind protection

This site is well-suited for a future yardsite, bin
yard, or additional infrastructure.

Key Details:

Mobile Home â€™ Not included in the sale;
belongs to a family member. The new owner
may retain the tenant (tenant rights apply).

Older Home â€™ Unfit for habitation.

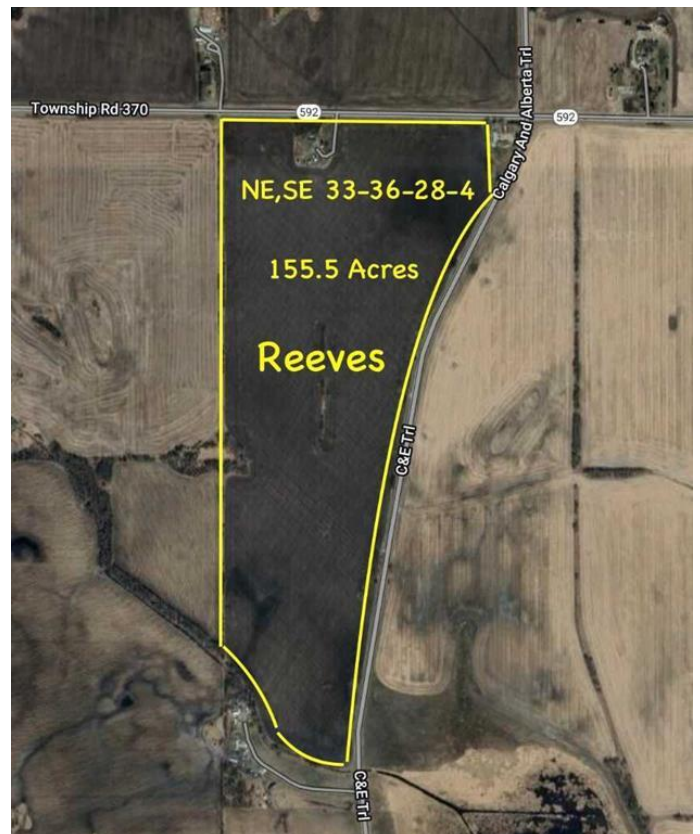
Outbuildings â€™ Included in "as-is, where-is"
condition.

Treed Area â€™ Provides an effective wind
barrier, ideal for a yardsite or bin storage.

Agricultural & Investment Potential:

High-quality arable farmland, ideal for
high-yield crop production.

Strategic location near the new flour milling
facility in Springbrook, enhancing its value for



grain producers.

Surface Lease â€“ The property has an orphan well currently being decommissioned.

A Rare Opportunity!

Don't miss this chance to own a highly visible, well-serviced, and productive farmland in a rapidly developing agricultural hub.

Essential Information

MLS® #	A2200939
Price	\$1,400,000
Bathrooms	0.00
Acres	155.50
Type	Land
Sub-Type	Commercial Land
Status	Active

Community Information

Address	28327 Highway 592
Subdivision	NONE
City	Rural Red Deer County
County	Red Deer County
Province	Alberta
Postal Code	T4E 1S6

Amenities

Utilities	Electricity Available
-----------	-----------------------

Additional Information

Date Listed	March 10th, 2025
Days on Market	2
Zoning	AG

Listing Details

Listing Office	CIR Realty
----------------	------------

Data is supplied by Pillar 9â„¢ MLSÂ® System. Pillar 9â„¢ is the owner of the copyright in its MLSÂ® System. Data is deemed reliable but is not guaranteed accurate by Pillar 9â„¢. The trademarks MLSÂ®, Multiple Listing ServiceÂ® and the associated logos are owned by The Canadian Real Estate Association (CREA) and identify the quality of services provided by real estate professionals who are members of CREA. Used under license.