

\$519,900 - 240 Doverglen Place Se, Calgary

MLS® #A2201058

\$519,900

4 Bedroom, 2.00 Bathroom, 1,013 sqft
Residential on 0.11 Acres

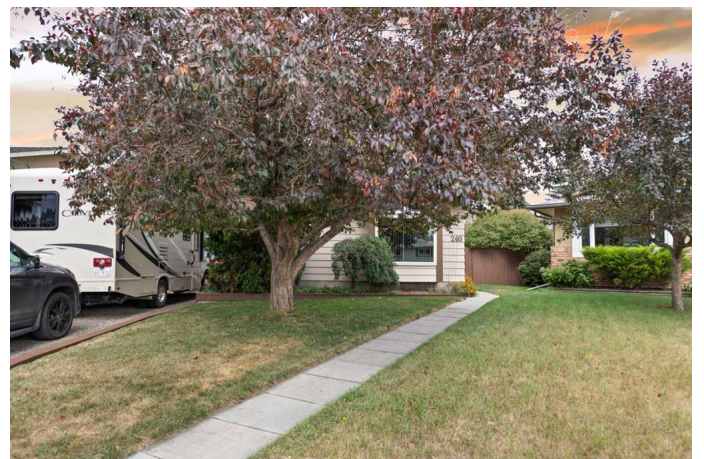
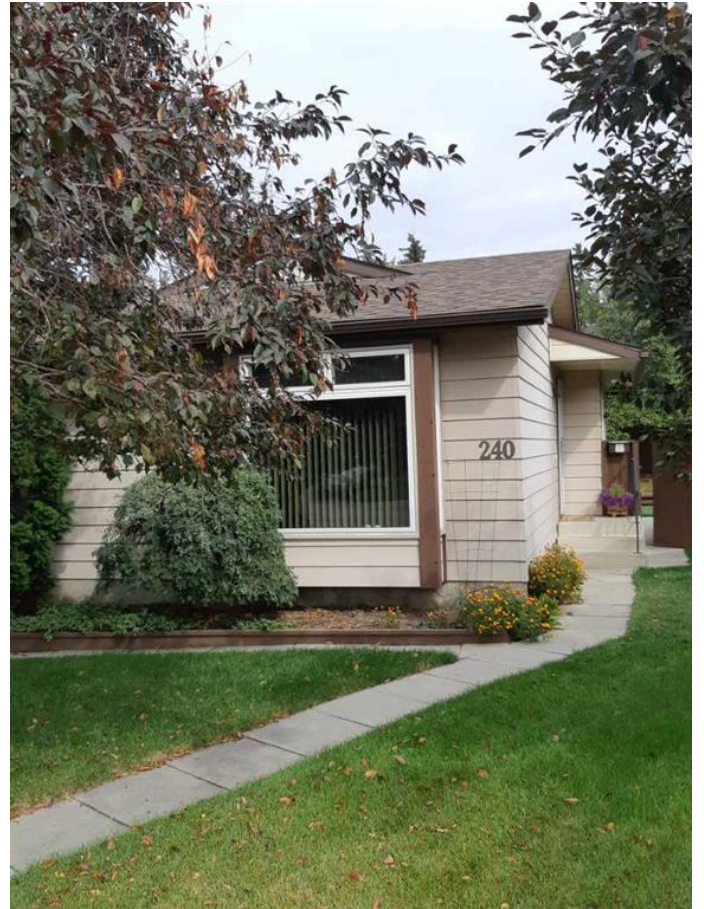
Dover, Calgary, Alberta

CUL DE SAC LOCATION. FULLY DEVELOPED SUPER CLEAN BUNGALOW. FEATURES INCLUDE, 4 BEDROOMS, 2 FULL BATHS ONE HAS JETTED TUB. FULLY DEVELOPED LOWER LEVEL. FURNACE AND HOT WATER REPLACED IN 2014, MAIN FLOOR WINDOWS HAVE BEEN REPLACED, NEW SHINGLES IN SPRING OF 2024. SEPERATE ENTRANCE TO LOWER LEVEL.. LARGE PIE SHAPED LOT. RV PARKING ALONGSIDE OF HOME. CLOSE TO TRANSPORATION, SCHOOLS, BUS, WALKING TRAILS AND MUCH MORE. POSSESSION IS FLEXIBLE. CALL YOUR REALTOR TO SHOW.

Built in 1981

Essential Information

MLS® #	A2201058
Price	\$519,900
Bedrooms	4
Bathrooms	2.00
Full Baths	2
Square Footage	1,013
Acres	0.11
Year Built	1981
Type	Residential
Sub-Type	Detached
Style	Bungalow
Status	Active



Community Information

Address	240 Doverglen Place Se
Subdivision	Dover
City	Calgary
County	Calgary
Province	Alberta
Postal Code	T2B 2P7

Amenities

Parking Spaces	4
Parking	Off Street, RV Access/Parking

Interior

Interior Features	See Remarks
Appliances	Dishwasher, Electric Stove, Refrigerator, Washer/Dryer, Window Coverings
Heating	Forced Air, Natural Gas
Cooling	None
Has Basement	Yes
Basement	Finished, Full

Exterior

Exterior Features	None
Lot Description	Back Yard, Cul-De-Sac, Pie Shaped Lot
Roof	Asphalt Shingle
Construction	Metal Siding
Foundation	Poured Concrete

Additional Information

Date Listed	March 10th, 2025
Days on Market	2
Zoning	R-CG

Listing Details

Listing Office	TREC The Real Estate Company
----------------	------------------------------

Data is supplied by Pillar 9â„¢ MLSÂ® System. Pillar 9â„¢ is the owner of the copyright in its MLSÂ® System. Data is deemed reliable but is not guaranteed accurate by Pillar 9â„¢. The trademarks MLSÂ®, Multiple Listing ServiceÂ® and the associated logos are owned by The Canadian Real Estate Association (CREA) and identify the quality of services provided by real estate professionals who are members of CREA. Used under license.