

\$1,604,000 - 884 Hwy, Special Areas No. 3

MLS® #A2202052

\$1,604,000

0 Bedroom, 0.00 Bathroom,
Agri-Business on 0.00 Acres

NONE, Special Areas No. 3, Alberta

6 1/4's of cultivated land for sale between
Youngstown and Bigstone along Hwy 884

- 951.98 acres total

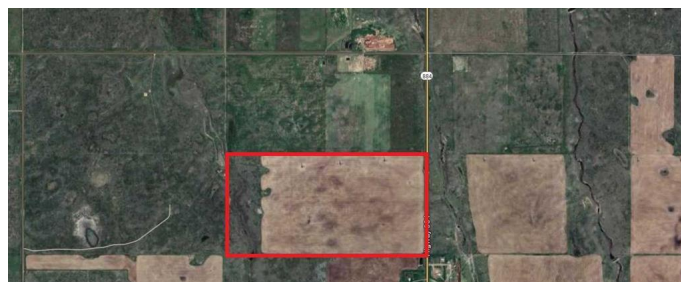
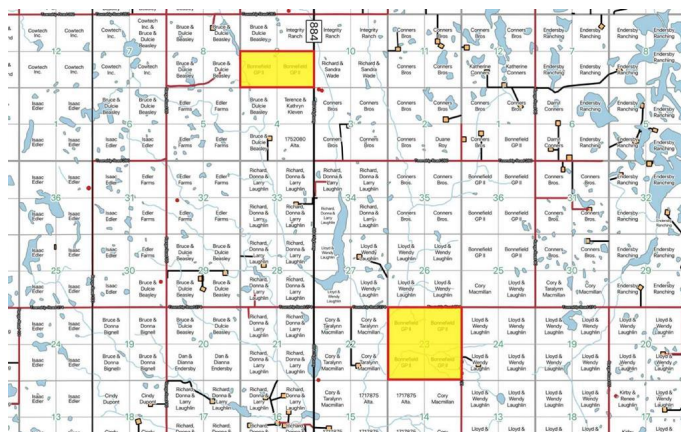
- 802 acres cultivated

Section 23-27-9 W4

South half 9-28-9 W4

Priced to sell at just \$2000/ cultivated acre!

Land is available for the 2025 season with a
spring or fall possession possible, fall
possession would allow buyer to lease the
land for the 2025 crop year so it can be farmed
this spring.



Essential Information

MLS® #	A2202052
Price	\$1,604,000
Bathrooms	0.00
Acres	0.00

Type	Agri-Business
Sub-Type	Agriculture
Status	Active

Community Information

Address	884 Hwy
Subdivision	NONE
City	Special Areas No. 3
County	Special Area 3
Province	Alberta
Postal Code	T0J 0A9

Additional Information

Date Listed	March 12th, 2025
Days on Market	1
Zoning	AG

Listing Details

Listing Office	Real Estate Centre - Coaldale
----------------	-------------------------------

Data is supplied by Pillar 9â„¢ MLSÂ® System. Pillar 9â„¢ is the owner of the copyright in its MLSÂ® System. Data is deemed reliable but is not guaranteed accurate by Pillar 9â„¢. The trademarks MLSÂ®, Multiple Listing ServiceÂ® and the associated logos are owned by The Canadian Real Estate Association (CREA) and identify the quality of services provided by real estate professionals who are members of CREA. Used under license.