

\$649,900 - 28 Hamptons Place Se, Medicine Hat

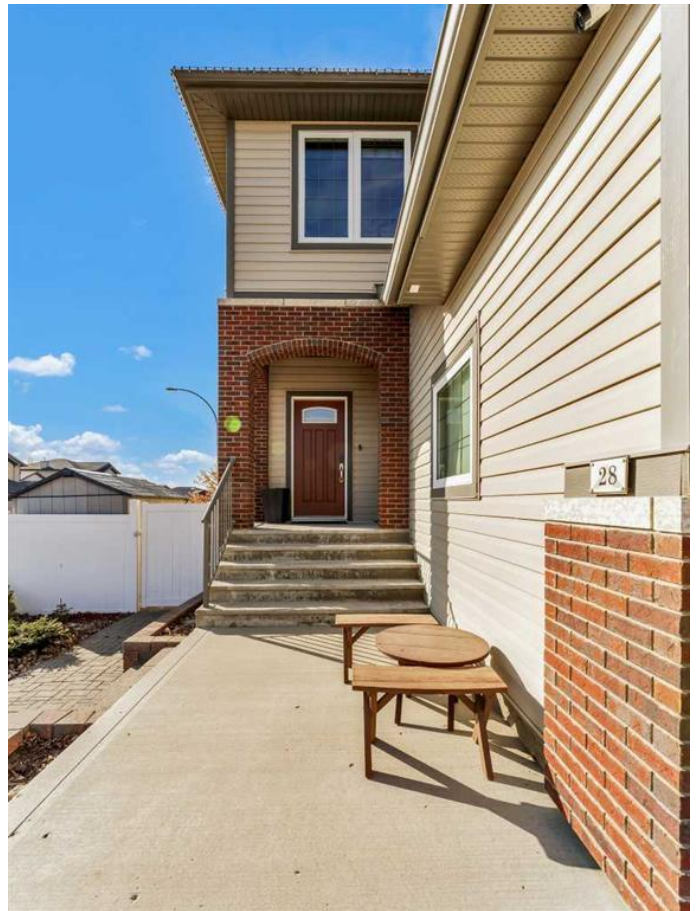
MLS® #A2202167

\$649,900

5 Bedroom, 4.00 Bathroom, 1,822 sqft
Residential on 0.14 Acres

SE Southridge, Medicine Hat, Alberta

Welcome to this beautifully finished Bravada home in the heart of The Hamptons, designed with warmth, comfort, and family living in mind. From the moment you step inside, youâ€™ll feel at home in the inviting and bright, open-concept layout. The kitchen is perfect for gathering, featuring a built-in oven and dishwasher, sleek stainless steel appliances, island with seating, a corner pantry, rich charcoal maple cabinets with under-cabinet lighting, and stunning quartz countertopsâ€”ideal for meal prep and entertaining. The kitchen flows effortlessly into the cozy living room, where a gas fireplace sets the scene for relaxing evenings with loved ones. Upstairs, youâ€™ll find three spacious bedrooms, including a serene primary suite with a luxurious 5-piece ensuite, complete with a jetted tubâ€”your private retreat after a long day. A walk-in closet provides plenty of storage, while the conveniently located upper level laundry area makes daily chores a breeze. A 4-piece bath serves the additional bedrooms, ensuring plenty of space for the whole family. The upper level is also home to a good size bonus room that creates privacy between the bedrooms and offers great overflow space. The fully developed lower level is perfect for extra living space, offering a comfortable family room, two additional bedrooms, and a bathroom with a 4-foot showerâ€”great for guests or a growing family. This home is packed with high-quality upgrades, including an ICF foundation, spray



foam insulation, a tankless hot water heater, a heat recovery ventilator, and a high-efficiency furnace with dual-zone heating for year-round comfort, and 2x6 construction. The spacious, heated triple garage provides ample parking, and there's even potential for RV parking. The backyard is fully landscaped and fenced with vinyl fencing and underground sprinklers front and back - the covered deck is situated off the dining space and kitchen providing another checked box and appreciable feature for a family or entertainers. Charming curb appeal with brick accents and neutral exterior tones create an inviting quality. Situated in a family-friendly neighborhood, this home is just minutes from parks, schools, and all the conveniences The Hamptons has to offer. Don't miss your chance to make this warm and inviting home your own!

Built in 2012

Essential Information

MLS® #	A2202167
Price	\$649,900
Bedrooms	5
Bathrooms	4.00
Full Baths	3
Half Baths	1
Square Footage	1,822
Acres	0.14
Year Built	2012
Type	Residential
Sub-Type	Detached
Style	2 Storey
Status	Active

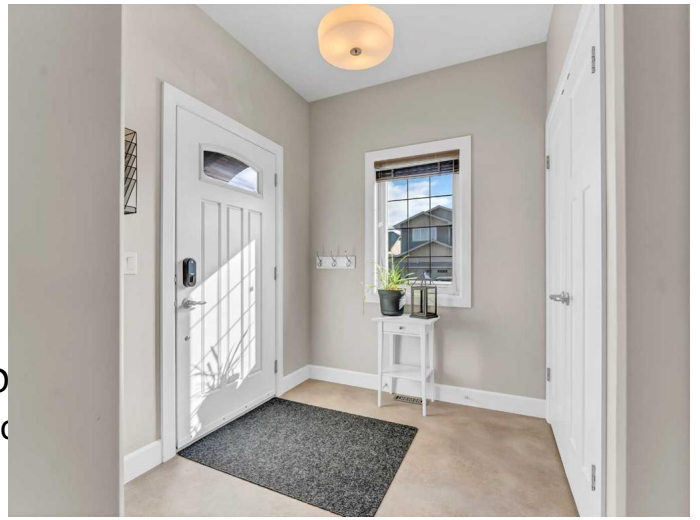
Community Information

Address	28 Hamptons Place Se
Subdivision	SE Southridge

City	Medicine Hat
County	Medicine Hat
Province	Alberta
Postal Code	T1B0C7

Amenities

Parking Spaces	3
Parking	Concrete Driveway, Front Driveway, Front, Heated Garage, RV Access
# of Garages	3



Interior

Interior Features	Built-in Features, Ceiling Fan(s), Central Vacuum, Kitchen Island, Open Floorplan, Vinyl Windows, Walk-In Closet(s)
Appliances	Central Air Conditioner, Dishwasher, Electric Stove, Garage Control(s), Microwave, Washer/Dryer
Heating	Forced Air, Natural Gas
Cooling	Central Air
Fireplace	Yes
# of Fireplaces	1
Fireplaces	Brick Facing, Gas, Living Room
Has Basement	Yes
Basement	Finished, Full

Exterior

Exterior Features	Other
Lot Description	Cul-De-Sac, Landscaped, Street Lighting
Roof	Asphalt Shingle
Construction	Mixed
Foundation	ICF Block

Additional Information

Date Listed	March 15th, 2025
Days on Market	38
Zoning	R-LD

Listing Details

Listing Office	ROYAL LEPAGE COMMUNITY REALTY
----------------	-------------------------------

Data is supplied by Pillar 9â„¢ MLSÂ® System. Pillar 9â„¢ is the owner of the copyright in its MLSÂ® System. Data is deemed reliable but is not guaranteed accurate by Pillar 9â„¢. The trademarks MLSÂ®, Multiple Listing ServiceÂ® and

the associated logos are owned by The Canadian Real Estate Association (CREA) and identify the quality of services provided by real estate professionals who are members of CREA. Used under license.