

\$489,888 - 128 Honeysuckle Way, Fort McMurray

MLS® #A2205658

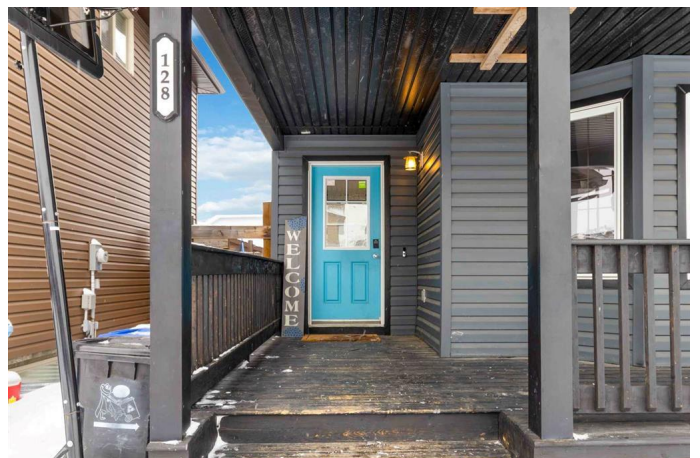
\$489,888

4 Bedroom, 4.00 Bathroom, 1,639 sqft

Residential on 0.07 Acres

Timberlea, Fort McMurray, Alberta

GORGEOUS CURB APPEAL COMBINED WITH A FRESHLY PAINTED INTERIOR AND EXPLAINARY DESIGN AND FINISHINGS, ALONG WITH A DETACHED DOUBLE HEATED GARAGE! Once the exterior of this home steals your heart, you will fall in love with this fully developed 2-story home with over 2100 sq ft of living space, that includes 4 bedrooms, 4 bathrooms, luxury vinyl plank floors on the main, and charming additions from top to bottom. The main level features an oversized front great room that leads to your custom kitchen with solid wood cabinetry, island, and eat-in breakfast bar, and corner pantry. The dining room features a grand space for an oversized kitchen table and garden doors leading to your back door. This main level is complete with a 2 pc powder room and main floor laundry room. Take the staircase to the upper level tat features 3 generously sized bedrooms. The primary bedroom offers a walk-in closet and a full ensuite. This upper level offers a 2nd 4 pc bathroom. The fully finished lower level offers 9 ft ceilings, a great family room, and games room. In addition, you have a large 4th bedroom and full bathroom. The exterior of the home features a lovely front veranda, a fully fenced yard, an oversized deck, a low-maintenance yard, and a 22x22(exterior measurements) detached heated garage. An additional bonus you have the needed central a/c for our hot summer days. This home offers an excellent location next to a large children's



park, walking trails, quad and snowmobile trails, and within walking distance to schools from K-12 and site and city bus stops. Call today for your personal tour today!

Built in 2009

Essential Information

MLS® #	A2205658
Price	\$489,888
Bedrooms	4
Bathrooms	4.00
Full Baths	3
Half Baths	1
Square Footage	1,639
Acres	0.07
Year Built	2009
Type	Residential
Sub-Type	Detached
Style	2 Storey
Status	Active

Community Information

Address	128 Honeysuckle Way
Subdivision	Timberlea
City	Fort McMurray
County	Wood Buffalo
Province	Alberta
Postal Code	T9K 0M8

Amenities

Parking Spaces	2
Parking	Double Garage Detached, Garage Door Opener, Heated Garage, Insulated
# of Garages	2

Interior

Interior Features	Breakfast Bar, Closet Organizers, Kitchen Island, Open Floorplan, Pantry, Storage, Vinyl Windows, Walk-In Closet(s)
-------------------	---

Appliances	Central Air Conditioner, Dishwasher, Microwave, Refrigerator, Stove(s), Washer/Dryer
Heating	Forced Air, Natural Gas
Cooling	Central Air
Has Basement	Yes
Basement	Finished, Full

Exterior

Exterior Features	Private Yard
Lot Description	Back Lane, Back Yard, Front Yard, Fruit Trees/Shrub(s), Landscaped, Lawn
Roof	Asphalt Shingle
Construction	Vinyl Siding
Foundation	Poured Concrete

Additional Information

Date Listed	March 26th, 2025
Days on Market	25
Zoning	R1S

Listing Details

Listing Office	COLDWELL BANKER UNITED
----------------	------------------------

Data is supplied by Pillar 9â„¢ MLS® System. Pillar 9â„¢ is the owner of the copyright in its MLS® System. Data is deemed reliable but is not guaranteed accurate by Pillar 9â„¢. The trademarks MLS®, Multiple Listing Service® and the associated logos are owned by The Canadian Real Estate Association (CREA) and identify the quality of services provided by real estate professionals who are members of CREA. Used under license.