

# \$469,900 - 430 Miners Chase W, Lethbridge

MLS® #A2207670

**\$469,900**

3 Bedroom, 3.00 Bathroom, 1,307 sqft

Residential on 0.08 Acres

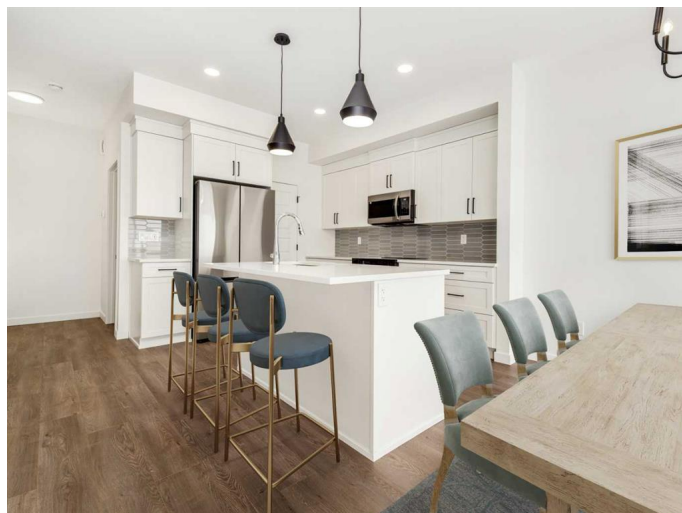
Copperwood, Lethbridge, Alberta

The popular "Grayson" model by Avonlea Homes. This home is close to School, Park and Play Ground. Check out these great new elevations. Nice and open floor plan on the main floor, 9' Flat Painted ceilings, large windows for that extra sunlight. Great corner pantry in the kitchen for storage. Upstairs there are 3 nice bedrooms, full bath, convenience of laundry, master bedroom with walk in closet and ensuite with 5' shower. The Basement is undeveloped but set up for family room, 4th bedroom and another full bath. Close to school, park and Playground. Home is virtually staged. New Home Warranty

Built in 2024

## Essential Information

|                |             |
|----------------|-------------|
| MLS® #         | A2207670    |
| Price          | \$469,900   |
| Bedrooms       | 3           |
| Bathrooms      | 3.00        |
| Full Baths     | 2           |
| Half Baths     | 1           |
| Square Footage | 1,307       |
| Acres          | 0.08        |
| Year Built     | 2024        |
| Type           | Residential |
| Sub-Type       | Detached    |
| Style          | 2 Storey    |
| Status         | Active      |



## Community Information

|             |                    |
|-------------|--------------------|
| Address     | 430 Miners Chase W |
| Subdivision | Copperwood         |
| City        | Lethbridge         |
| County      | Lethbridge         |
| Province    | Alberta            |
| Postal Code | T1J5T9             |

## Amenities

|                |                        |
|----------------|------------------------|
| Parking Spaces | 4                      |
| Parking        | Double Garage Attached |
| # of Garages   | 2                      |

## Interior

|                   |  |
|-------------------|--|
| Interior Features | Kitchen Island, Pantry, Quartz Counters, Walk-In Closet(s)   |
| Appliances        | Dishwasher, Electric Range, Microwave Hood Fan, Refrigerator |
| Heating           | Forced Air   |
| Cooling           | None   |
| Has Basement      | Yes  |
| Basement          | Full, Unfinished   |

## Exterior

|                   |                                    |
|-------------------|------------------------------------|
| Exterior Features | None                               |
| Lot Description   | Back Lane                          |
| Roof              | Asphalt Shingle                    |
| Construction      | Concrete, Vinyl Siding, Wood Frame |
| Foundation        | Poured Concrete                    |

## Additional Information

|                |                 |
|----------------|-----------------|
| Date Listed    | April 5th, 2025 |
| Days on Market | 22              |
| Zoning         | RCL             |

## Listing Details

|                |                                 |
|----------------|---------------------------------|
| Listing Office | RE/MAX REAL ESTATE - LETHBRIDGE |
|----------------|---------------------------------|

Data is supplied by Pillar 9â„¢ MLS® System. Pillar 9â„¢ is the owner of the copyright in its MLS® System. Data is deemed reliable but is not guaranteed accurate by Pillar 9â„¢. The trademarks MLS®, Multiple Listing Service® and the associated logos are owned by The Canadian Real Estate Association (CREA) and identify the quality of services provided by real estate professionals who are members of CREA. Used under license.