

\$370,000 - 259 Sprague Way Se, Medicine Hat

MLS® #A2209264

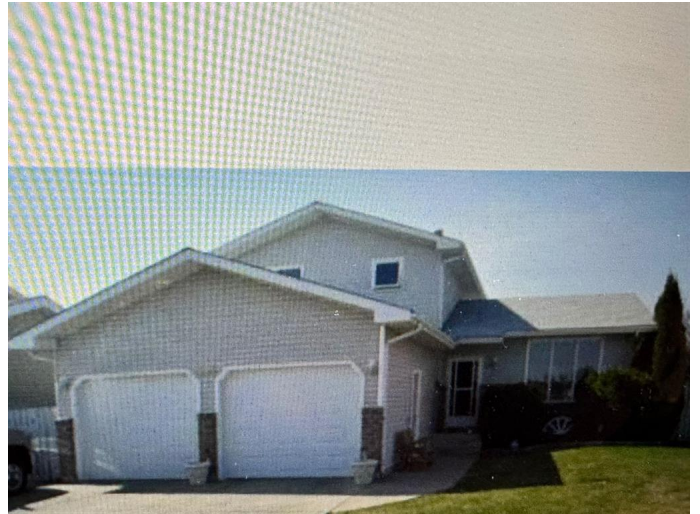
\$370,000

5 Bedroom, 3.00 Bathroom, 1,776 sqft
Residential on 0.14 Acres

SE Southridge, Medicine Hat, Alberta

Court ordered sale. Everything is "as is"

Built in 1989



Essential Information

MLS® #	A2209264
Price	\$370,000
Bedrooms	5
Bathrooms	3.00
Full Baths	3
Square Footage	1,776
Acres	0.14
Year Built	1989
Type	Residential
Sub-Type	Detached
Style	1 and Half Storey
Status	Active

Community Information

Address	259 Sprague Way Se
Subdivision	SE Southridge
City	Medicine Hat
County	Medicine Hat
Province	Alberta
Postal Code	T1B 3L9

Amenities

Parking Spaces	4
Parking	Double Garage Detached

of Garages 2

Interior

Interior Features See Remarks
Appliances See Remarks
Heating Forced Air
Cooling Central Air
Has Basement Yes
Basement Full, Partially Finished

Exterior

Exterior Features None
Lot Description Back Lane, Back Yard
Roof Asphalt Shingle
Construction Brick, Stucco, Vinyl Siding, Wood Frame
Foundation Poured Concrete

Additional Information

Date Listed April 15th, 2025
Days on Market 8
Zoning R-LD

Listing Details

Listing Office RIVER STREET REAL ESTATE

Data is supplied by Pillar 9â„¢ MLSÂ® System. Pillar 9â„¢ is the owner of the copyright in its MLSÂ® System. Data is deemed reliable but is not guaranteed accurate by Pillar 9â„¢. The trademarks MLSÂ®, Multiple Listing ServiceÂ® and the associated logos are owned by The Canadian Real Estate Association (CREA) and identify the quality of services provided by real estate professionals who are members of CREA. Used under license.