

# \$569,900 - 39 Lindman Close, Sylvan Lake

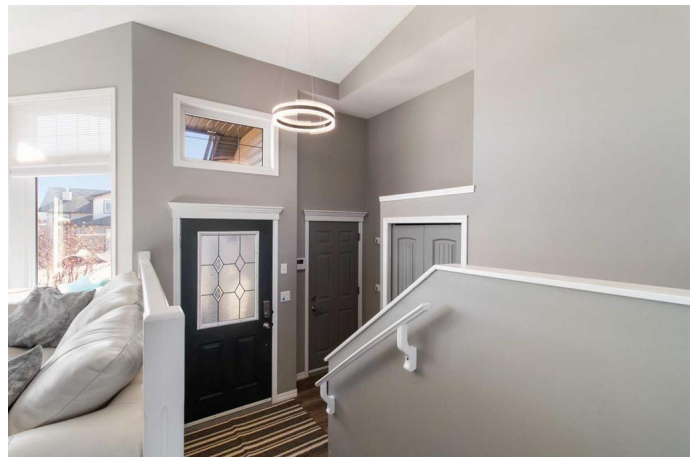
MLS® #A2211269

**\$569,900**

5 Bedroom, 3.00 Bathroom, 1,220 sqft  
Residential on 0.15 Acres

Lakeway Landing, Sylvan Lake, Alberta

Spacious Family Home with Stunning Sunsets & Private Backyard Oasis! Welcome to this warm and inviting 5-bedroom, 3-bathroom bi-level home, offering 1,220 sq ft of comfortable living space designed with family in mind. Nestled in a peaceful neighborhood, this home is perfect for growing families who value space, sunlight, and stylish touches throughout. Step inside to a bright and airy front living room, where three oversized east-facing windows flood the space with morning light. The floor-to-ceiling stone fireplace becomes a stunning focal point, drawing your eye up to the vaulted ceilings and enhancing the home's open-concept charm. The heart of the home is the stylish kitchen featuring newer quartz countertops, a fresh backsplash, and a corner pantry for extra storage. A central island with a built-in computer workspace adds both function and convenience for daily living. Upstairs, you'll find three generously sized bedrooms, including a primary suite with a 3-piece ensuite, walk-in closet, and built-in vanity desk. Two additional west-facing bedrooms offer plenty of space for kids to play and relax. Step out onto your large west-facing deck perfect for soaking in breathtaking sunsets. The new patio doors open to an extended deck with a gazebo, ideal for entertaining or simply unwinding after a long day. The lower level offers even more living space with two additional bedrooms, a full bathroom, a laundry room, and a sprawling



family room ready for movie nights or gatherings, also included, underfloor heat to make it cozy. The backyard is truly a private retreatâ€”featuring a stamped concrete patio, a custom waterfall, a hot tub, and a bar railing perfect for hosting friends and family. Not to forget the year round lighting on the exterior of the house, controlled by an app on your phone for convenience. Don't miss your chance to own this beautiful, family-friendly home with exceptional indoor and outdoor living!

Built in 2005

### Essential Information

MLS® #	A2211269
Price	\$569,900
Bedrooms	5
Bathrooms	3.00
Full Baths	3
Square Footage	1,220
Acres	0.15
Year Built	2005
Type	Residential
Sub-Type	Detached
Style	Bi-Level
Status	Active

### Community Information

Address	39 Lindman Close
Subdivision	Lakeway Landing
City	Sylvan Lake
County	Red Deer County
Province	Alberta
Postal Code	T4S 2M5

### Amenities

Parking Spaces	2
Parking	Double Garage Attached
# of Garages	2

## Interior

Interior Features	Kitchen Island, Laminate Counters, Open Floorplan, Quartz Counters, See Remarks, Vaulted Ceiling(s), Vinyl Windows
Appliances	Central Air Conditioner, Dishwasher, Dryer, Electric Stove, Garage Control(s), Microwave Hood Fan, Refrigerator, See Remarks, Washer, Water Softener, Window Coverings
Heating	Central, In Floor, Forced Air
Cooling	Central Air
Fireplace	Yes
# of Fireplaces	1
Fireplaces	Gas
Has Basement	Yes
Basement	Finished, Full, Walk-Out

## Exterior

Exterior Features	Balcony, BBQ gas line, Fire Pit, Private Yard
Lot Description	Back Lane, Gazebo, Landscaped, Private, Waterfall
Roof	Asphalt Shingle
Construction	Brick, Composite Siding, Concrete, See Remarks, Vinyl Siding, Wood Frame
Foundation	Poured Concrete, See Remarks

## Additional Information

Date Listed	April 11th, 2025
Days on Market	11
Zoning	R1

## Listing Details

Listing Office	Royal LePage Network Realty Corp.
----------------	-----------------------------------

Data is supplied by Pillar 9â„¢ MLSÂ® System. Pillar 9â„¢ is the owner of the copyright in its MLSÂ® System. Data is deemed reliable but is not guaranteed accurate by Pillar 9â„¢. The trademarks MLSÂ®, Multiple Listing ServiceÂ® and the associated logos are owned by The Canadian Real Estate Association (CREA) and identify the quality of services provided by real estate professionals who are members of CREA. Used under license.