

\$639,000 - 64 Castledale Crescent Ne, Calgary

MLS® #A2211408

\$639,000

4 Bedroom, 3.00 Bathroom, 1,301 sqft
Residential on 0.20 Acres

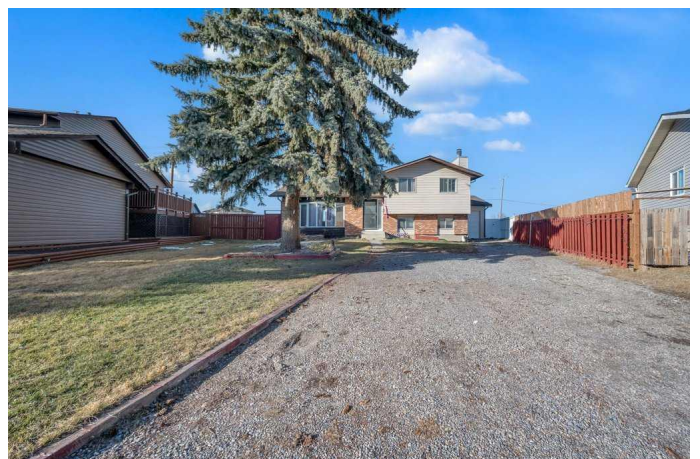
Castleridge, Calgary, Alberta

Huge pie-shaped lot with lots of parking and room to build additional garages or additions. Large sunken living room, vaulted ceiling, and floor-to-ceiling three-sided stone feature fireplace between Dining room with sliding doors to a new two-level deck in a private huge backyard. Kitchen with a large corner walk-in pantry, stainless steel appliances, a new glass tile backsplash, and plugs. Master bedroom with ensuite bathroom and wall-to-wall closet. Newer main bathroom. Lower-level family room with a feature floor-to-ceiling stone-faced fireplace, a newer full bathroom, a bedroom/den, and a separate entrance ideal for an illegal suite. The 4th level has a den, a recreation room, and a crawl space for storage. Recent upgrades - New roof shingles, siding, and eavestroughs (2020); upper & main level flooring (2020); paint (2020). Ensuite bathroom (2020), kitchen quartz (2020), single car garage (2020). Make an appointment for a showing with us right now to avoid missing the opportunity to acquire this outstanding house!

Built in 1981

Essential Information

MLS® #	A2211408
Price	\$639,000
Bedrooms	4
Bathrooms	3.00



Full Baths	3
Square Footage	1,301
Acres	0.20
Year Built	1981
Type	Residential
Sub-Type	Detached
Style	4 Level Split
Status	Active

Community Information

Address	64 Castledale Crescent Ne
Subdivision	Castleridge
City	Calgary
County	Calgary
Province	Alberta
Postal Code	T3J 1X4

Amenities

Parking Spaces	1
Parking	Driveway, Single Garage Detached
# of Garages	1

Interior

Interior Features	Vaulted Ceiling(s)
Appliances	Dishwasher, Gas Range, Microwave Hood Fan, Refrigerator, Washer/Dryer
Heating	Forced Air, Natural Gas
Cooling	None
Fireplace	Yes
# of Fireplaces	2
Fireplaces	Gas
Has Basement	Yes
Basement	Exterior Entry, Finished, Full

Exterior

Exterior Features	Fire Pit
Lot Description	Back Lane, Back Yard, Landscaped, Level, Pie Shaped Lot
Roof	Asphalt Shingle
Construction	Brick, Wood Frame, Wood Siding

Foundation Poured Concrete

Additional Information

Date Listed April 12th, 2025

Days on Market 7

Zoning R-C1

Listing Details

Listing Office RE/MAX iRealty Innovations

Data is supplied by Pillar 9â„¸ MLSÂ® System. Pillar 9â„¸ is the owner of the copyright in its MLSÂ® System. Data is deemed reliable but is not guaranteed accurate by Pillar 9â„¸. The trademarks MLSÂ®, Multiple Listing ServiceÂ® and the associated logos are owned by The Canadian Real Estate Association (CREA) and identify the quality of services provided by real estate professionals who are members of CREA. Used under license.