

# \$153,900 - 20, 398 16 Street Ne, Medicine Hat

MLS® #A2213835

## \$153,900

2 Bedroom, 1.00 Bathroom, 804 sqft  
Residential on 0.00 Acres

Northeast Crescent Heights, Medicine Hat,  
Alberta

Welcome to this charming 2-bedroom, 1-bathroom condo located on the 3rd floor in this very quiet NE Crescent Heights condo building. It offers a cozy and functional layout perfect for comfortable living. Both bedrooms are generously sized, and the unit features the convenience of in-suite laundry with a newer stacking washer and dryer. Enjoy cozy evenings by the gas fireplace or stay cool in the summer with the built-in wall A/C unit.

This pet-friendly (with restrictions), no-age-restriction home has seen several recent updates, including brand new flooring throughout, fresh paint, updated baseboards, a new toilet, upgraded bathroom light and shower head, a new kitchen light, newer ceiling fan, a brand new electric stove, and refreshed kitchen cabinetry.

Located close to schools, shopping, parks, and golf courses, this condo also includes 1 assigned off-street parking space and low condo fees of just \$355.21.

Whether you're a first-time buyer, downsizer, or investor, this is an excellent opportunity to own a beautifully updated home at an affordable price. Call your Realtor today to book a private viewing!

Built in 1974



## Essential Information

MLS® #	A2213835
Price	\$153,900
Bedrooms	2
Bathrooms	1.00
Full Baths	1
Square Footage	804
Acres	0.00
Year Built	1974
Type	Residential
Sub-Type	Apartment
Style	Multi Level Unit
Status	Active

## Community Information

Address	20, 398 16 Street Ne
Subdivision	Northeast Crescent Heights
City	Medicine Hat
County	Medicine Hat
Province	Alberta
Postal Code	T1A7L9

## Amenities

Amenities	Parking, Snow Removal
Parking Spaces	1
Parking	Off Street, Stall

## Interior

Interior Features	Laminate Counters
Appliances	Electric Range, Refrigerator, Washer/Dryer
Heating	Hot Water
Cooling	Wall/Window Unit(s)
Fireplace	Yes
# of Fireplaces	1
Fireplaces	Gas
# of Stories	3

## Exterior

Exterior Features	Balcony
-------------------	---------

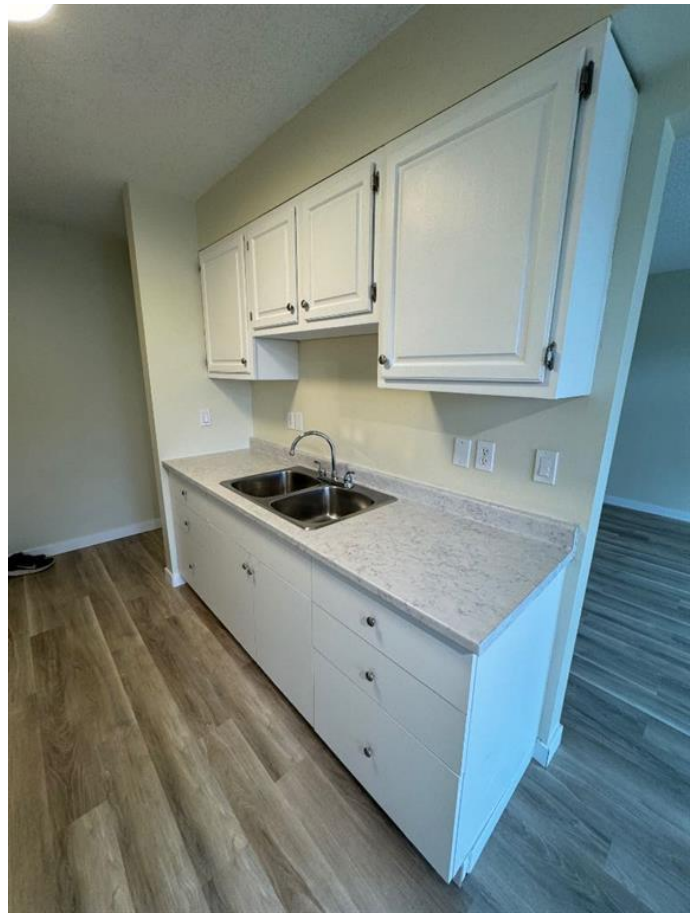
Roof Tar/Gravel  
Construction Brick

### **Additional Information**

Date Listed April 22nd, 2025  
Zoning R-MD

### **Listing Details**

Listing Office Real Estate Centre



Data is supplied by Pillar 9â,,ç MLSÂ® System. Pillar 9â,,ç is the owner of the copyright in its MLSÂ® System. Data is deemed reliable but is not guaranteed accurate by Pillar 9â,,ç. The trademarks MLSÂ®, Multiple Listing ServiceÂ® and the associated logos are owned by The Canadian Real Estate Association (CREA) and identify the quality of services provided by real estate professionals who are members of CREA. Used under license.