

\$3,300,000 - 271165 Range Road 60, Rural Rocky View County

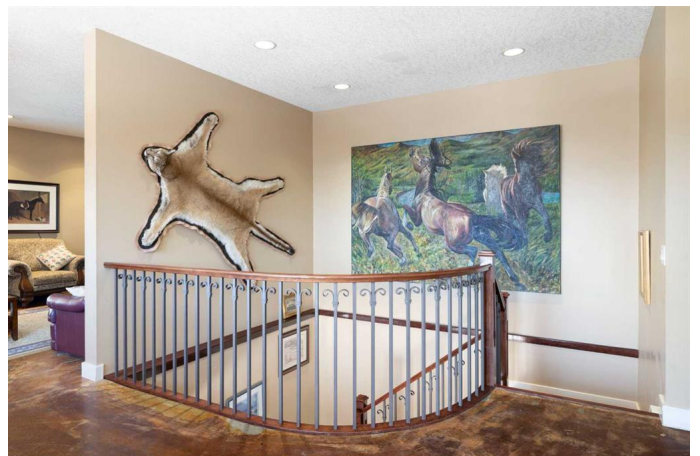
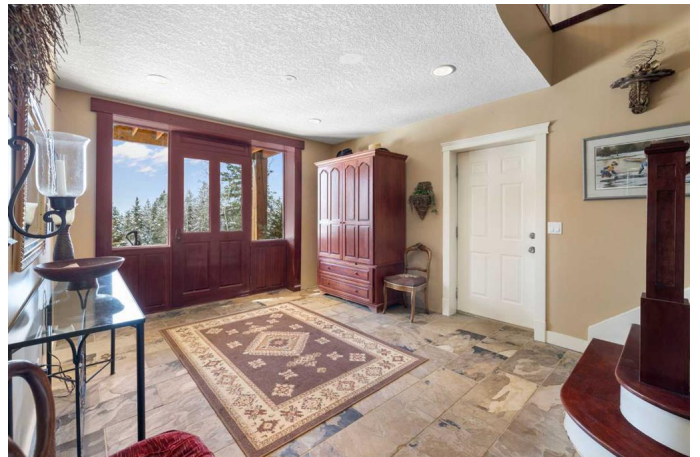
MLS® #A2214319

\$3,300,000

5 Bedroom, 4.00 Bathroom, 2,457 sqft
Residential on 161.00 Acres

NONE, Rural Rocky View County, Alberta

Welcome to 161 acres of paradise tucked away from any neighbors with mountain views and only 20 minutes from Cochrane. You are sure to be impressed with this reverse walk-out Bungalow built into the hillside. Starting with ICF foundation walls right up to the rafters. Poured concrete floors on each level with infloor heat and concrete tile roof. The main floor features a massive wood burning rock facing fireplace that warms up the Great room with the tall barreled ceiling and enjoys the mountain views. Tucked behind the fireplace is the dining room. The kitchen features lots of cabinets and counters and a commercial gas Stove with a double oven. Breakfast nook overlooks the deck and views. Next is the Bonus room with electric fireplace and wall units making this a great TV room. From here step out onto the incredible wrap-around covered deck. On the south side enjoy the mountain views and overlook your own paradise. Trust me this is a special place to relax and enjoy nature as it unfolds before your eyes. On the north side step down onto the massive patio area to enjoy large family gatherings. Back in the house past the Great room is an office and the Master bedroom with a walk-in closet and ensuite featuring a large jetted soaker tub and tiled steam shower and double sinks. Don't miss the sitting room for reading your favorite book. The lower level features 4 large bedrooms, high ceilings, a



large family room, laundry area, and large entrance with slate flooring. The oversized heated double attached garage with high ceilings makes a great hobby room or park two vehicles in the 24 x 24 ft space. Check out the 32 x 24 ft heated shop with mezzanine and lots of storage yard space. All this and still 161 acres of land to explore. Call for your personal viewing today!

Built in 2000

Essential Information

MLS® #	A2214319
Price	\$3,300,000
Bedrooms	5
Bathrooms	4.00
Full Baths	3
Half Baths	1
Square Footage	2,457
Acres	161.00
Year Built	2000
Type	Residential
Sub-Type	Detached
Style	Acreage with Residence, Bungalow
Status	Active

Community Information

Address	271165 Range Road 60
Subdivision	NONE
City	Rural Rocky View County
County	Rocky View County
Province	Alberta
Postal Code	T0L 0W0

Amenities

Parking Spaces	6
Parking	Double Garage Attached
# of Garages	2

Interior

Interior Features	Central Vacuum, Double Vanity, French Door, High Ceilings, Jetted Tub, Steam Room
Appliances	Dishwasher, Gas Stove, Range Hood, Refrigerator, Washer/Dryer
Heating	In Floor, Natural Gas, Boiler
Cooling	None
Fireplace	Yes
# of Fireplaces	2
Fireplaces	Electric, Wood Burning, Great Room, Raised Hearth, Stone
Has Basement	Yes
Basement	Walk-Out, See Remarks

Exterior

Exterior Features	Balcony, Courtyard, Fire Pit, Private Yard, Storage
Lot Description	Creek/River/Stream/Pond, Gentle Sloping, Treed
Roof	Clay Tile
Construction	Stucco
Foundation	ICF Block

Additional Information

Date Listed	April 23rd, 2025
Days on Market	3
Zoning	A-SML

Listing Details

Listing Office	Royal LePage Benchmark
----------------	------------------------

Data is supplied by Pillar 9â„¢ MLS® System. Pillar 9â„¢ is the owner of the copyright in its MLS® System. Data is deemed reliable but is not guaranteed accurate by Pillar 9â„¢. The trademarks MLS®, Multiple Listing Service® and the associated logos are owned by The Canadian Real Estate Association (CREA) and identify the quality of services provided by real estate professionals who are members of CREA. Used under license.